

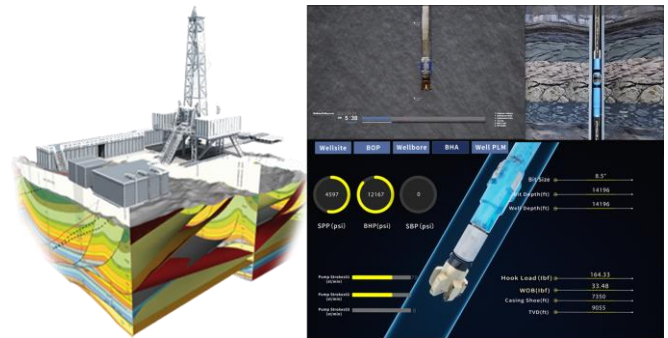
# HOLOWELLS Digital Twin Well Construction Platform *HOLOWELLS*

HOLOWELLS by Vertechs is an advanced well construction digital twin that offers exceptional collaboration and optimization for drilling operations at the rig site. Benefit from a data-driven model that seamlessly integrates all well data for real-time analytics.

## KEY BENEFITS:

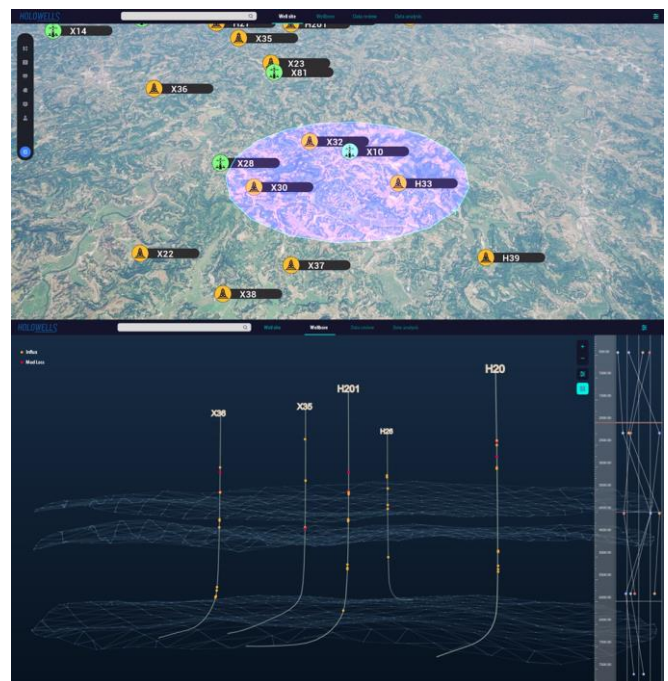
### ■ Integration of Geology and Engineering

HOLOWELLS allows you to access all your geology and engineering data in a single system and integrate your workflows. From formation lithology and layer distribution to well trajectory and BHA, you can manage everything with ease. The system provides contextualized downhole visualization, which helps drilling engineers feel more confident and in control.



### ■ Multiwell Analytics Platform

HOLOWELLS has a multiwell analytics platform that provides a comprehensive view of rig data and reporting data. This multiwell analytics platform is particularly useful for drilling engineers to enhance operational performance in a more organized manner. It allows them to analyze data in a contextual manner and store the results as lessons learned or best practices.



### ■ Rig-to-office Data Transfers

HOLOWELLS takes great care of our people and equipment on the rig site, management team can use real-time data to evaluate rig's state and condition, no matter where it's located.

## APPLICATIONS:

- Cost reduction
- Risk management
- Emission footprint calculation
- Team management and collaboration
- Wells with inefficient, or inconsistent or unpredictable drilling performance
- Aggregation of real-time data at any wellsite from multiple sources and formats